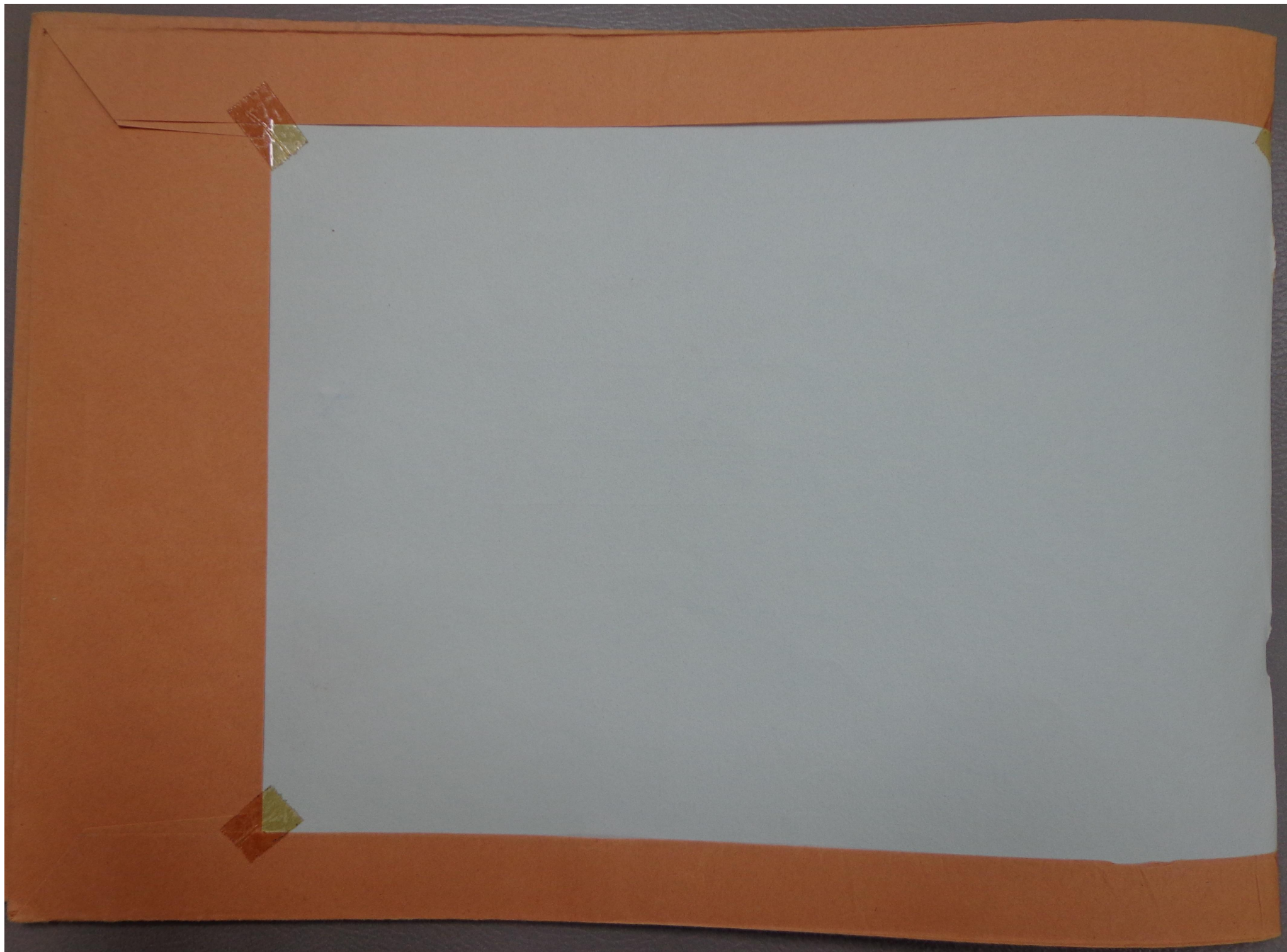


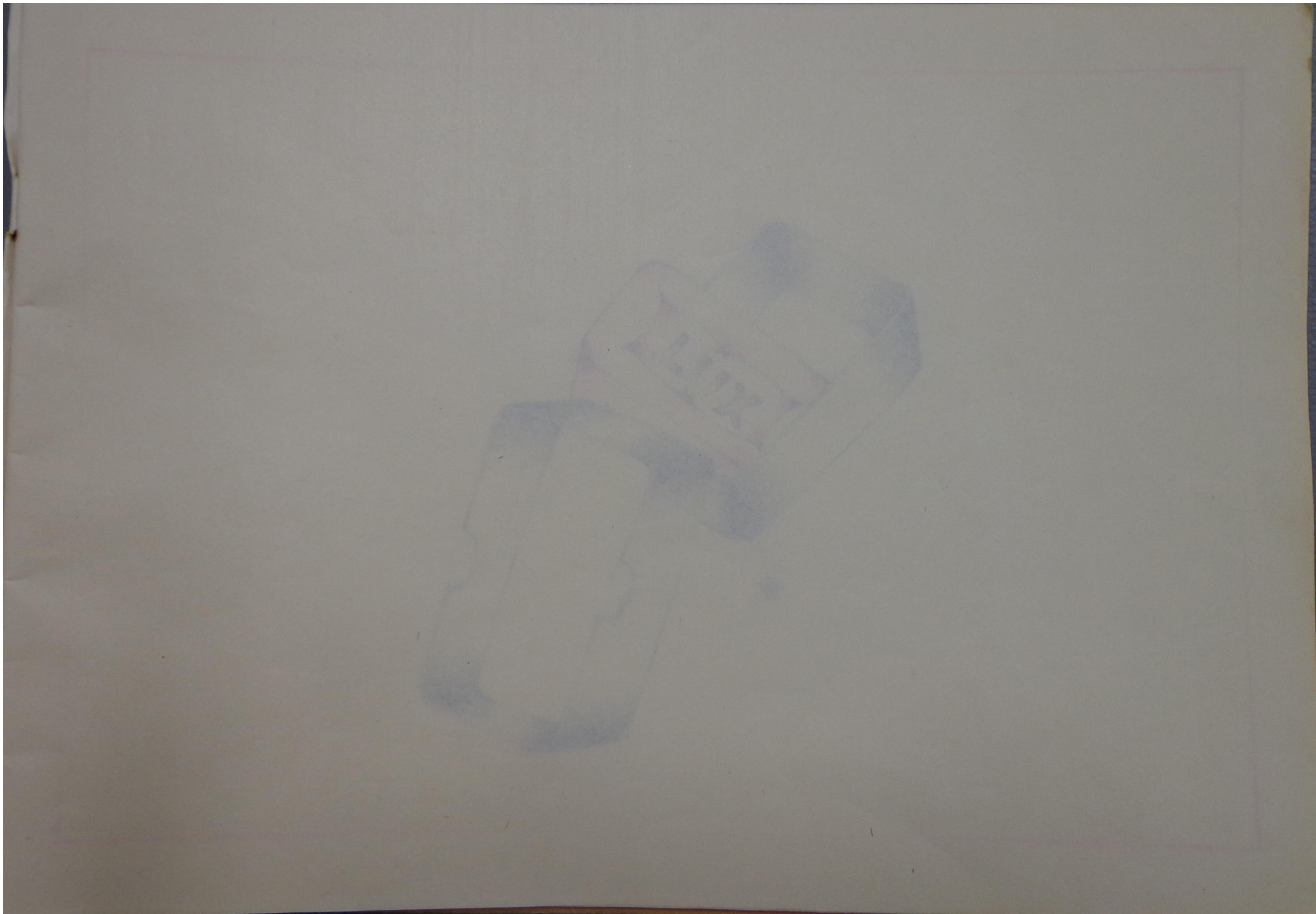
07

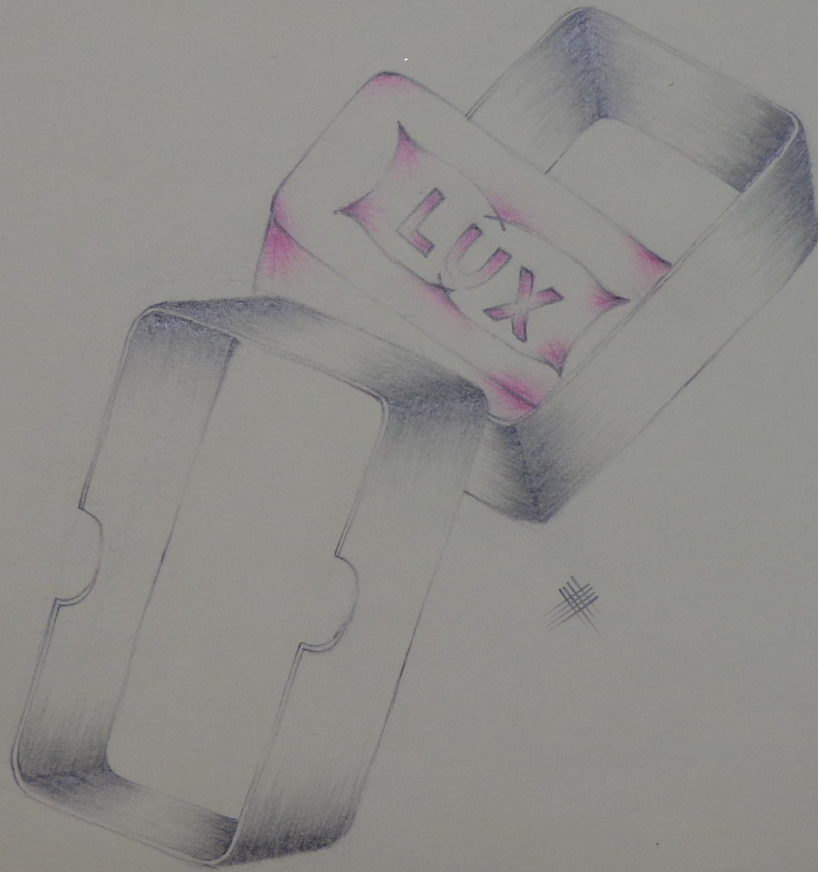
Enilda  
Maria  
Lras  
4ª série

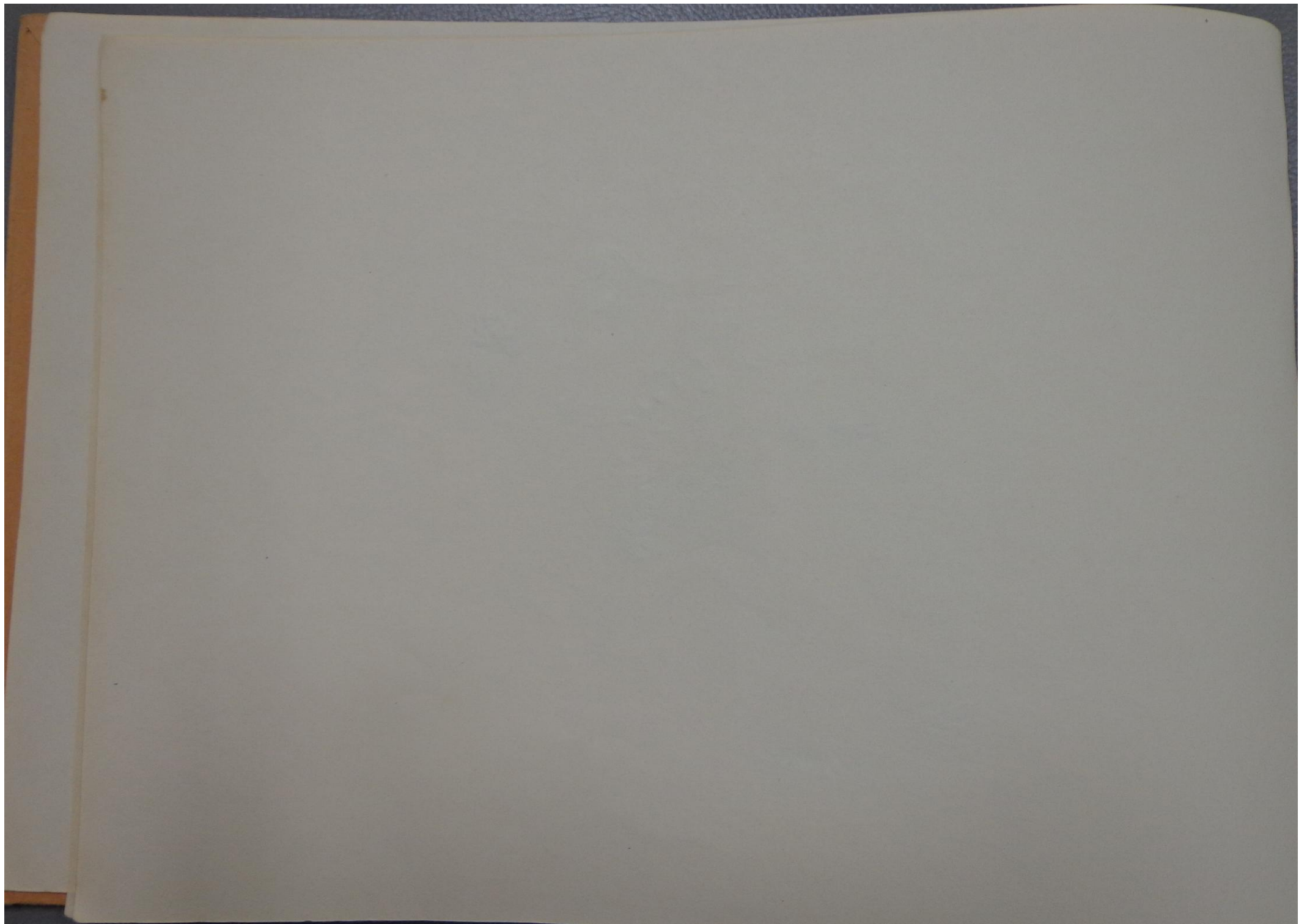


Handwritten text in blue ink, consisting of approximately 12 stylized characters or symbols arranged in a slightly curved line across the center of the page. Each character is enclosed within a blue, diamond-shaped frame with decorative flourishes.





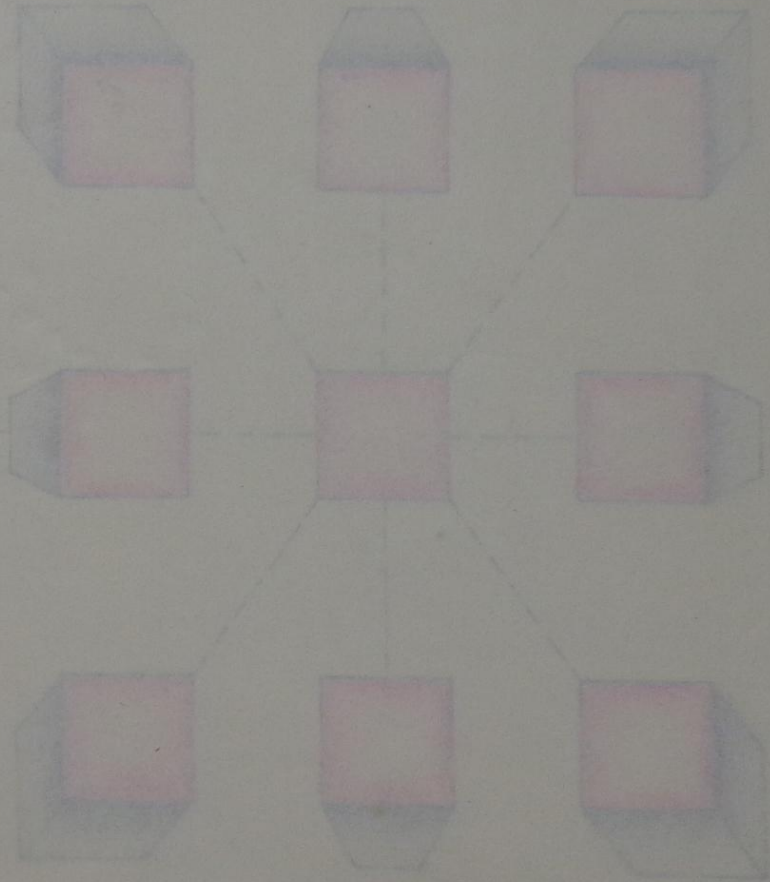




feixa da linha do  
horizonte

linha do horizonte

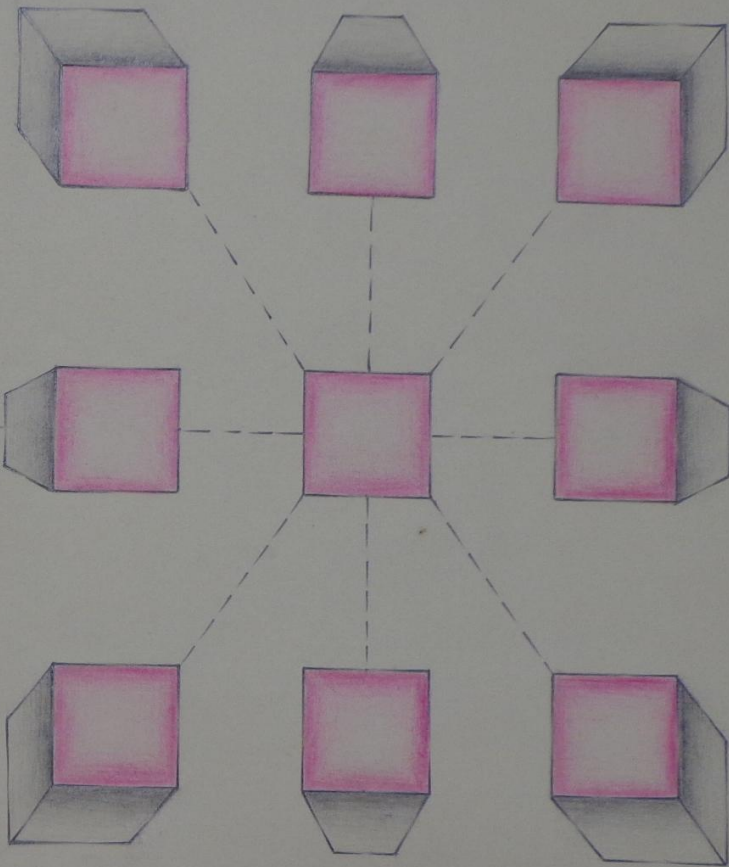
feixa da linha do  
horizonte



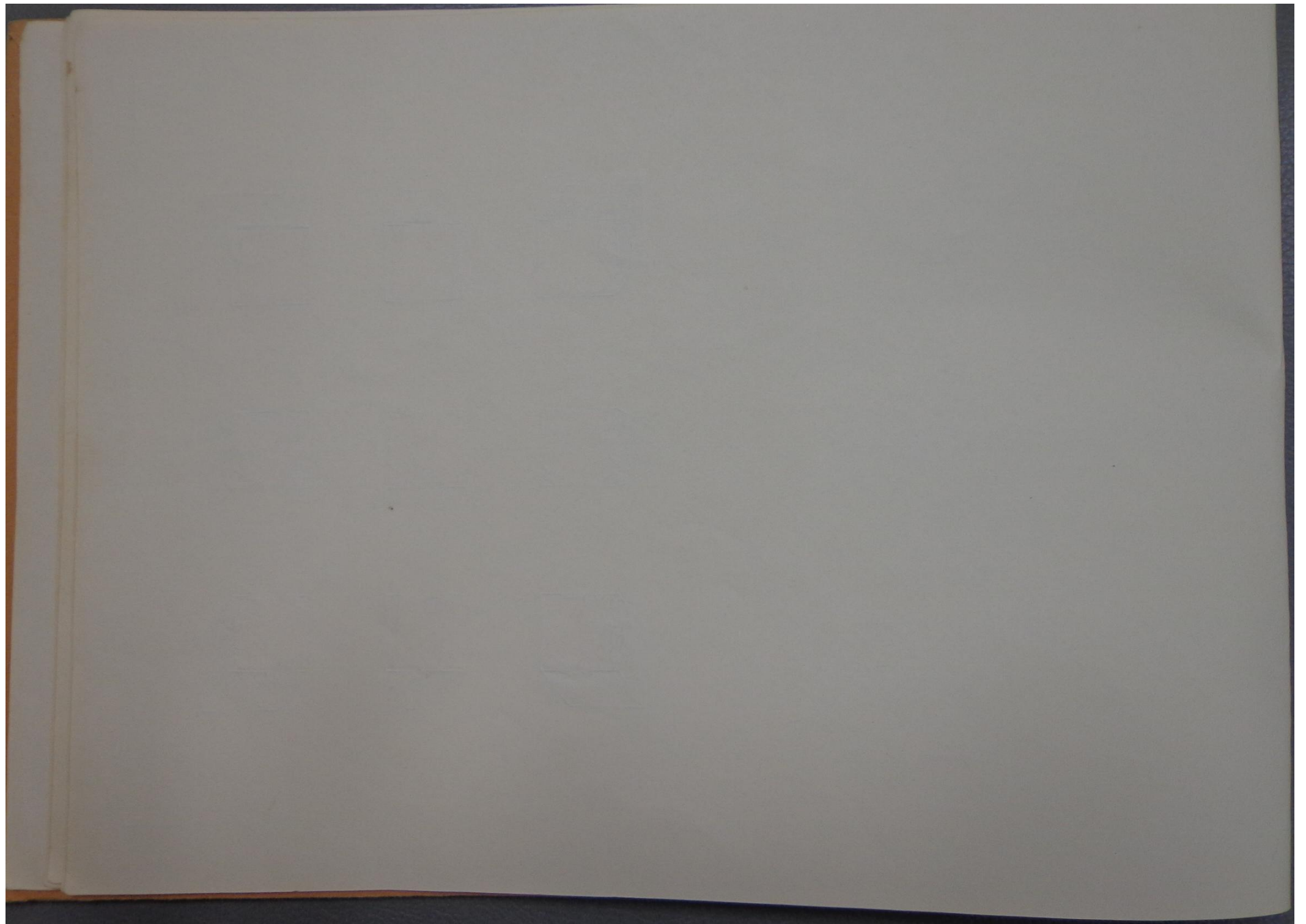
feixa da linha do horizonte

Linha do horizonte

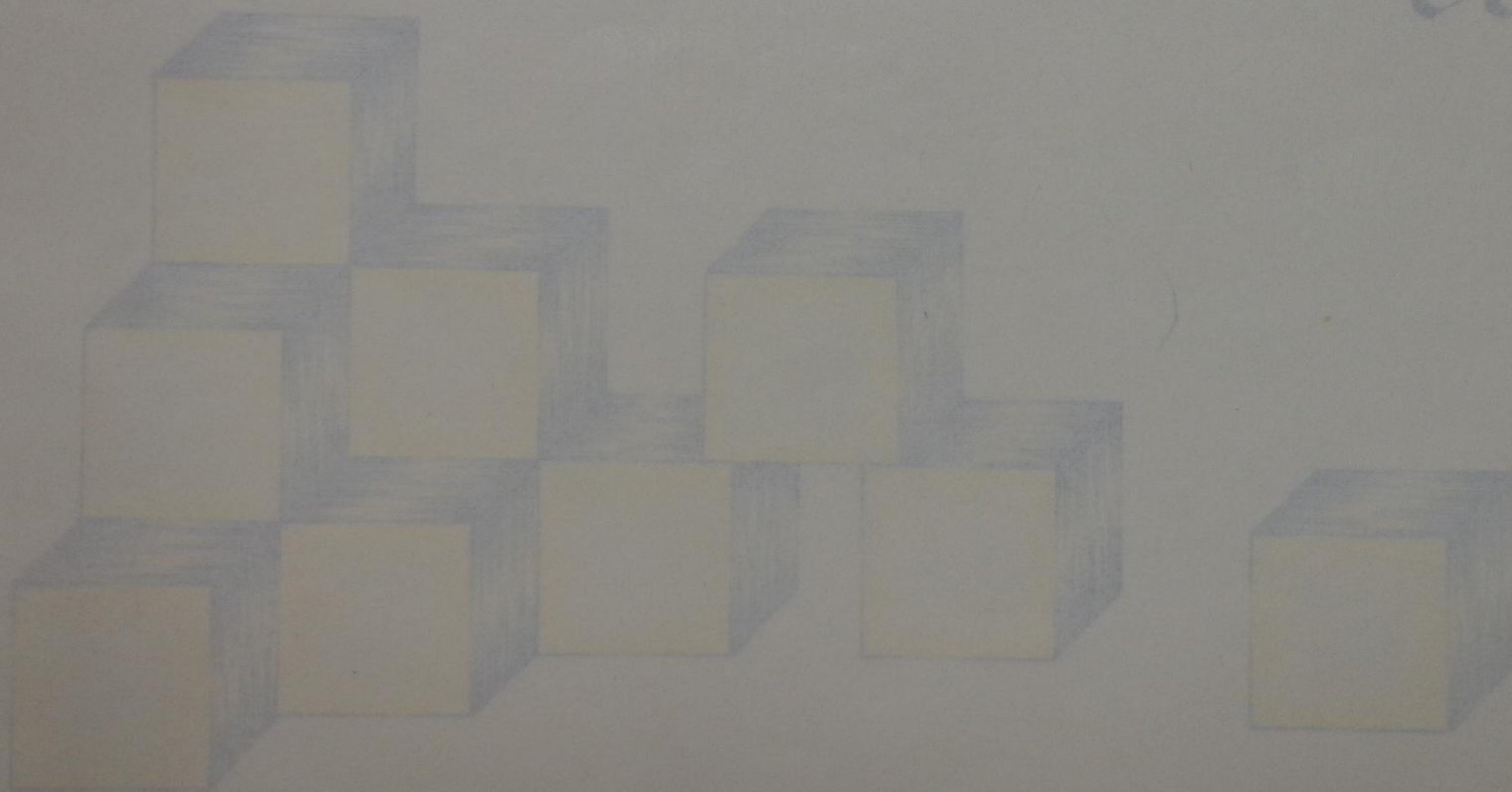
Abaixo da linha do horizonte



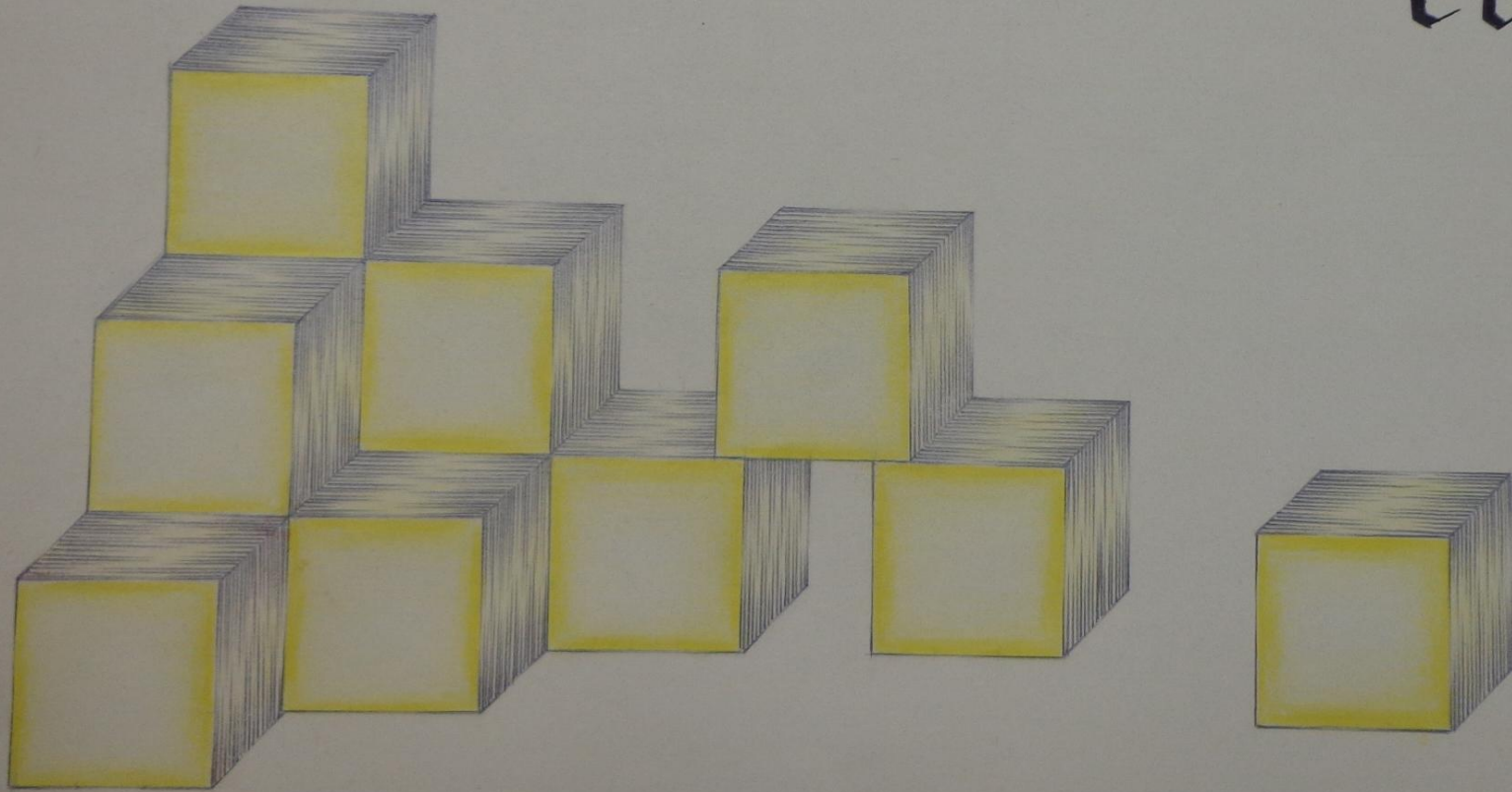




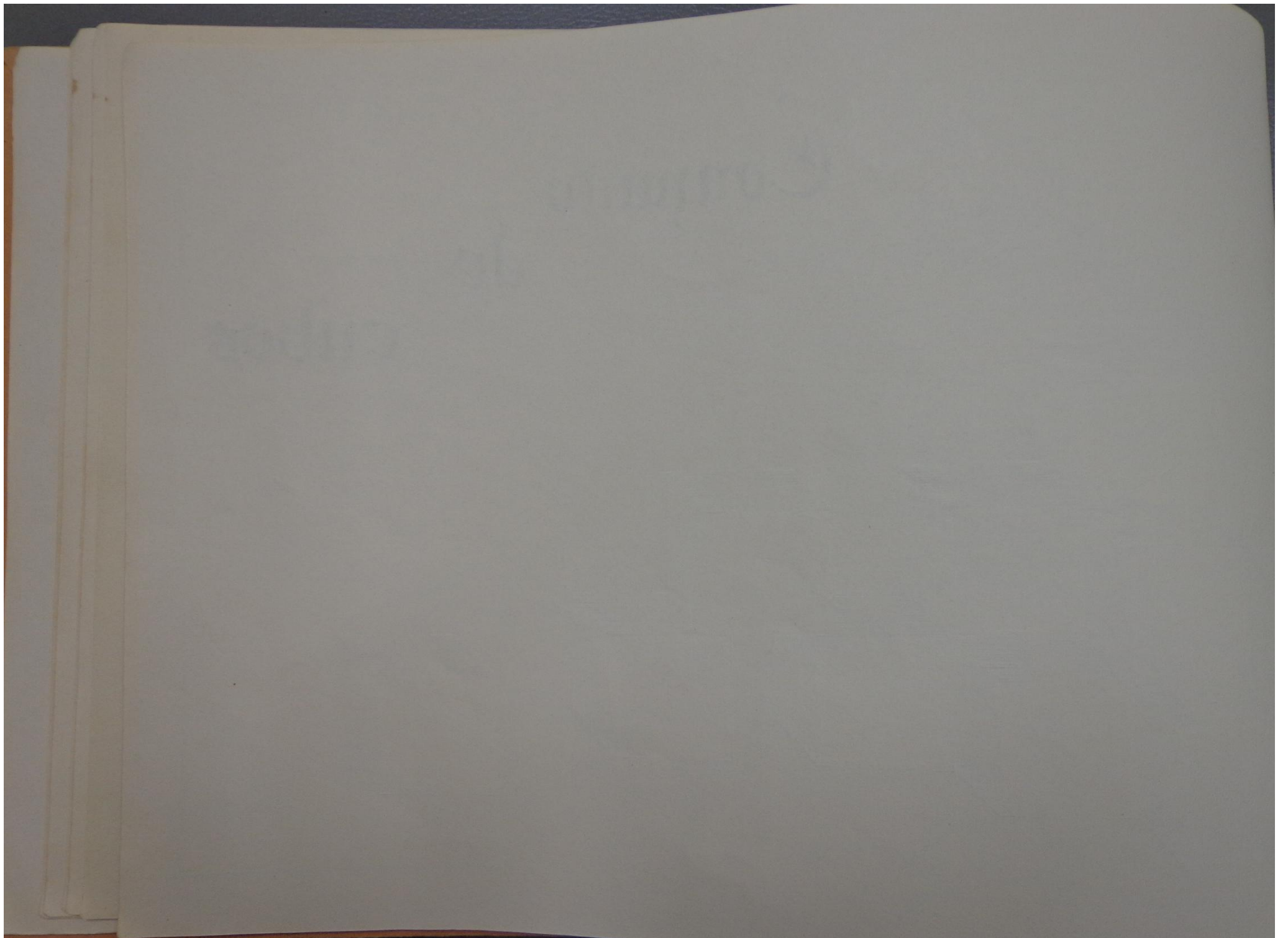
Conjunto  
de  
cubos

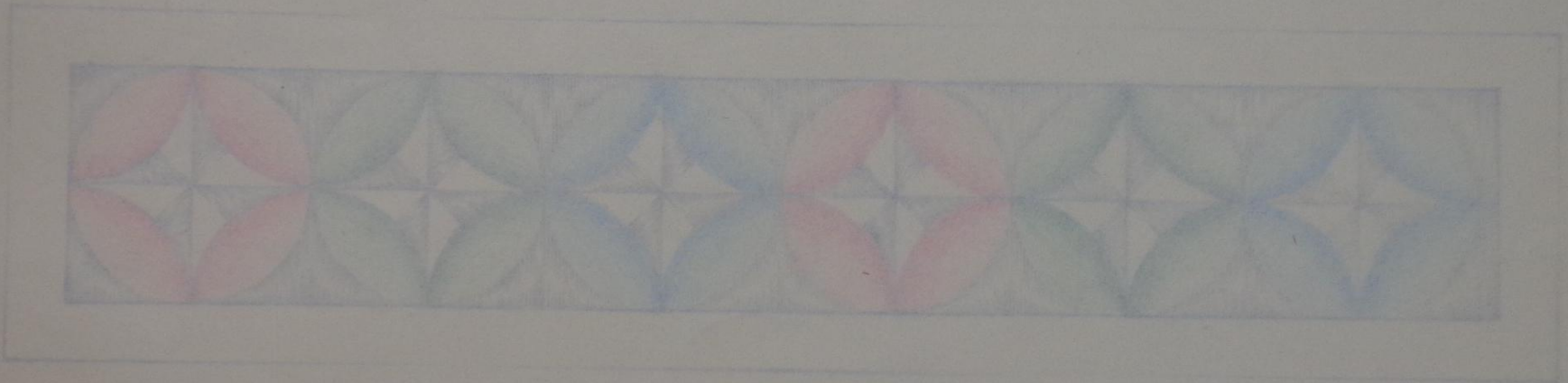
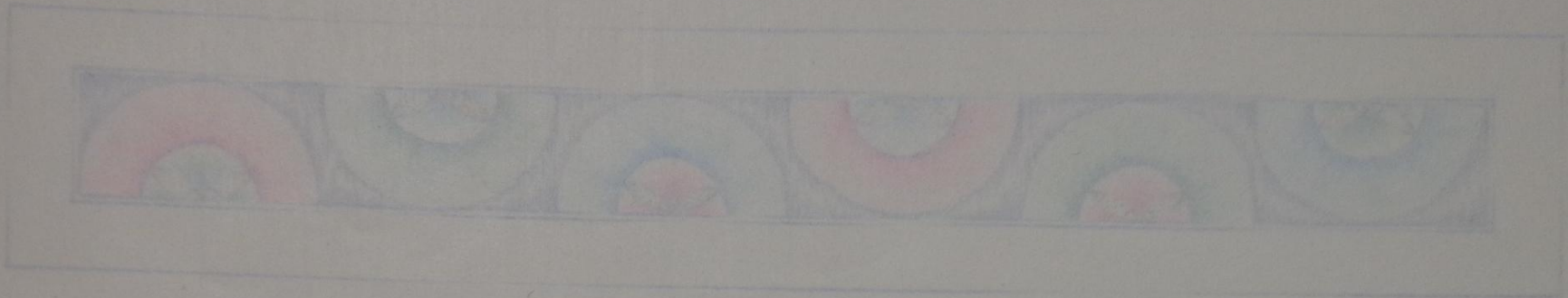


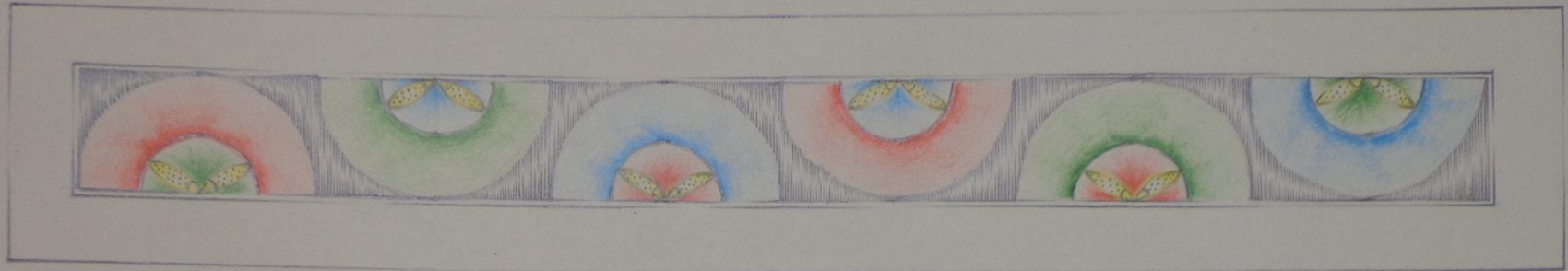
# Conjunto de cubos



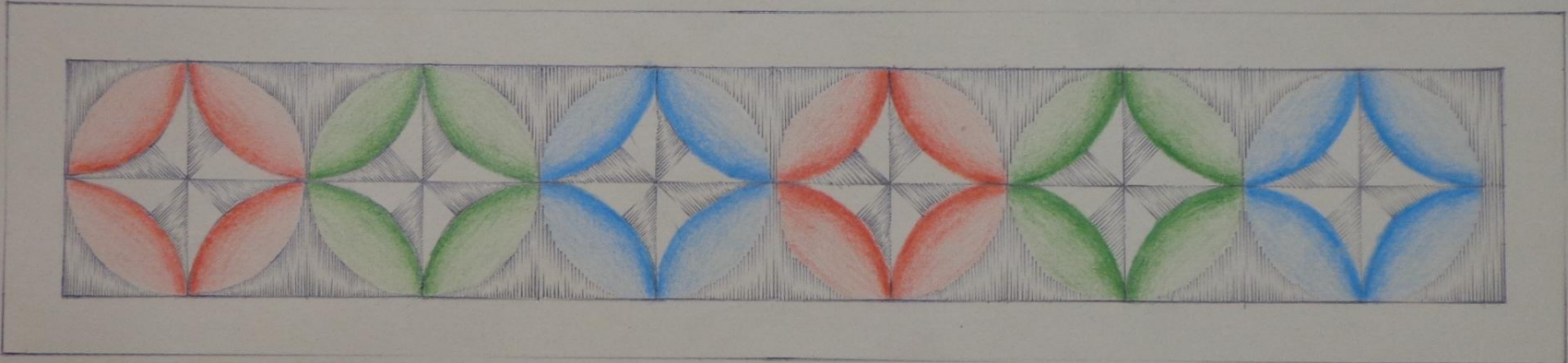
10.º  
10.º



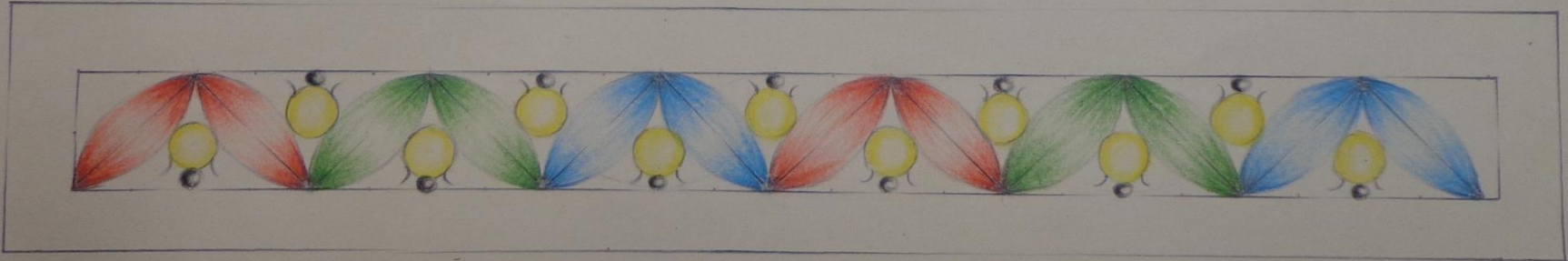




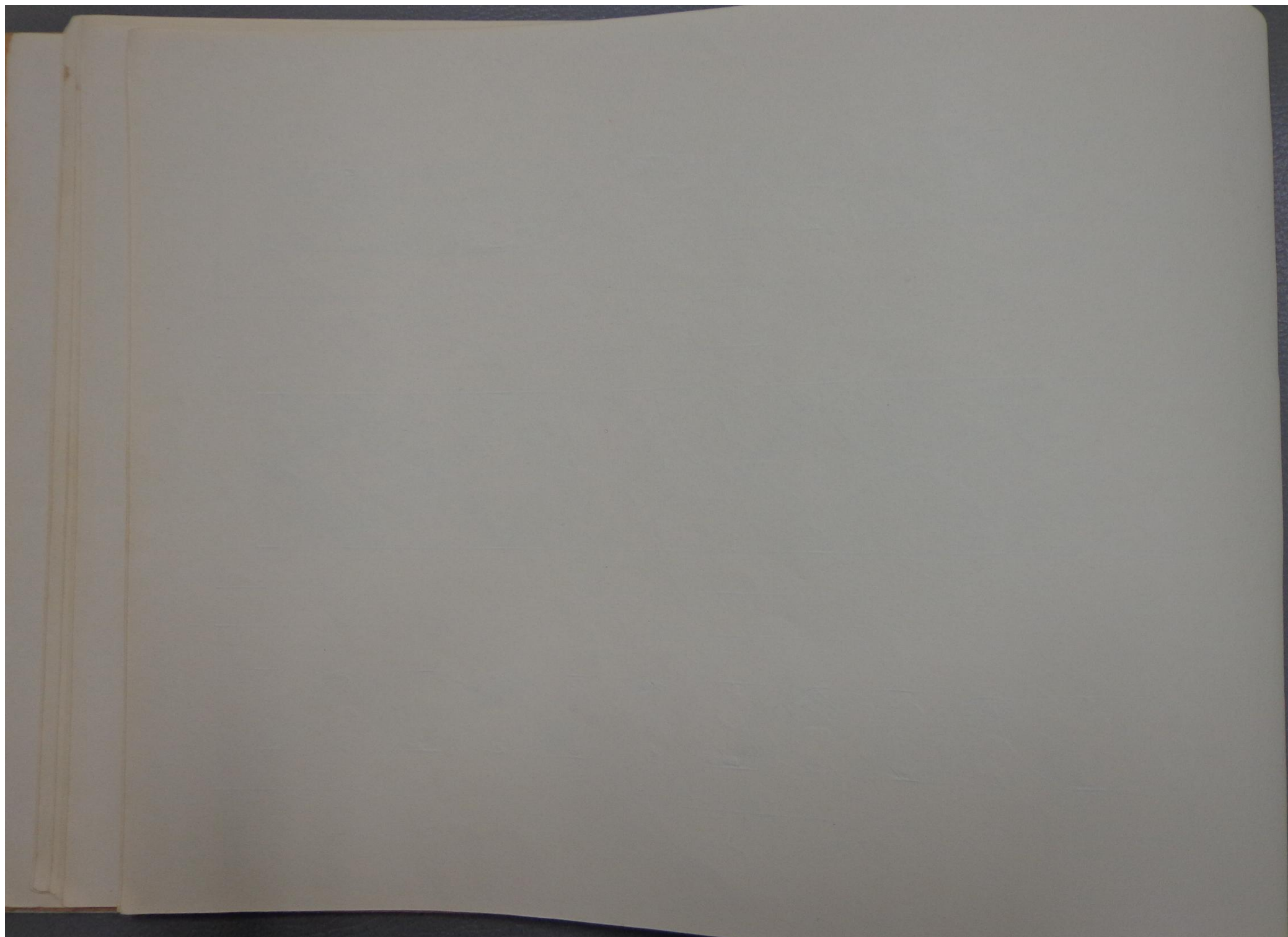
Vento

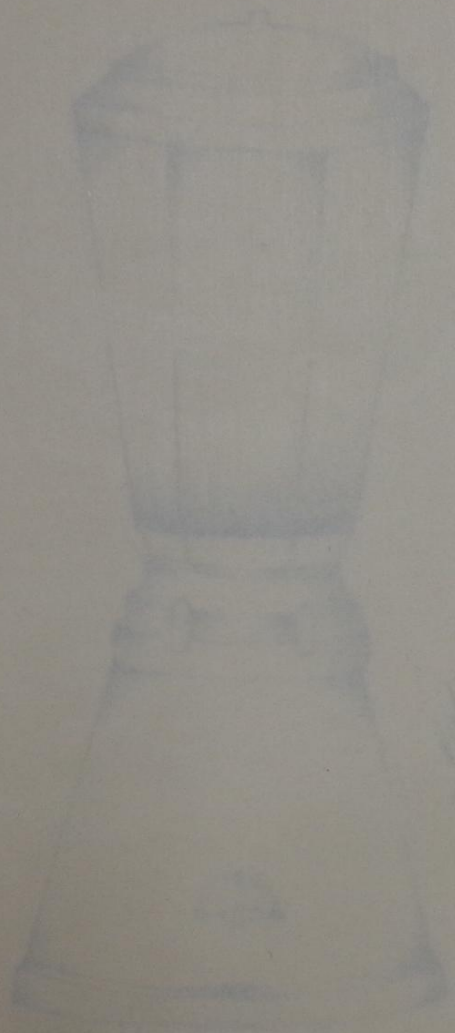


Vento

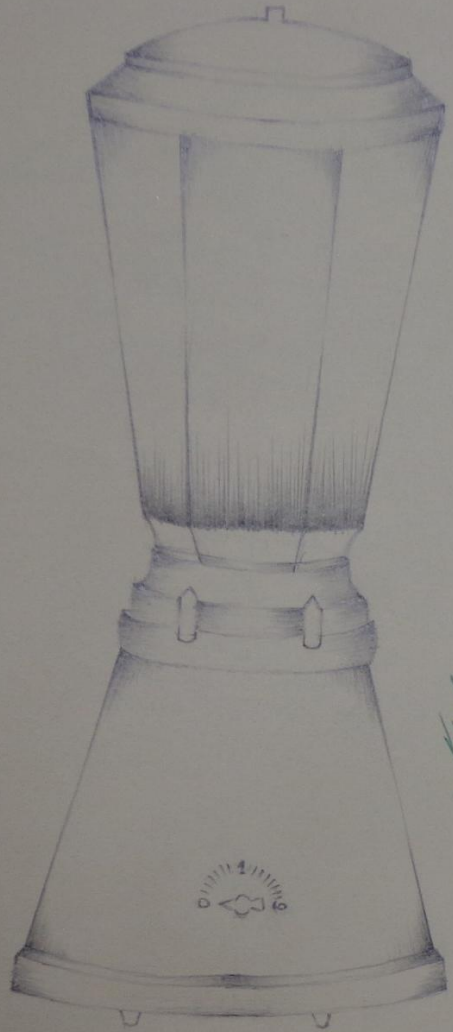


Vento

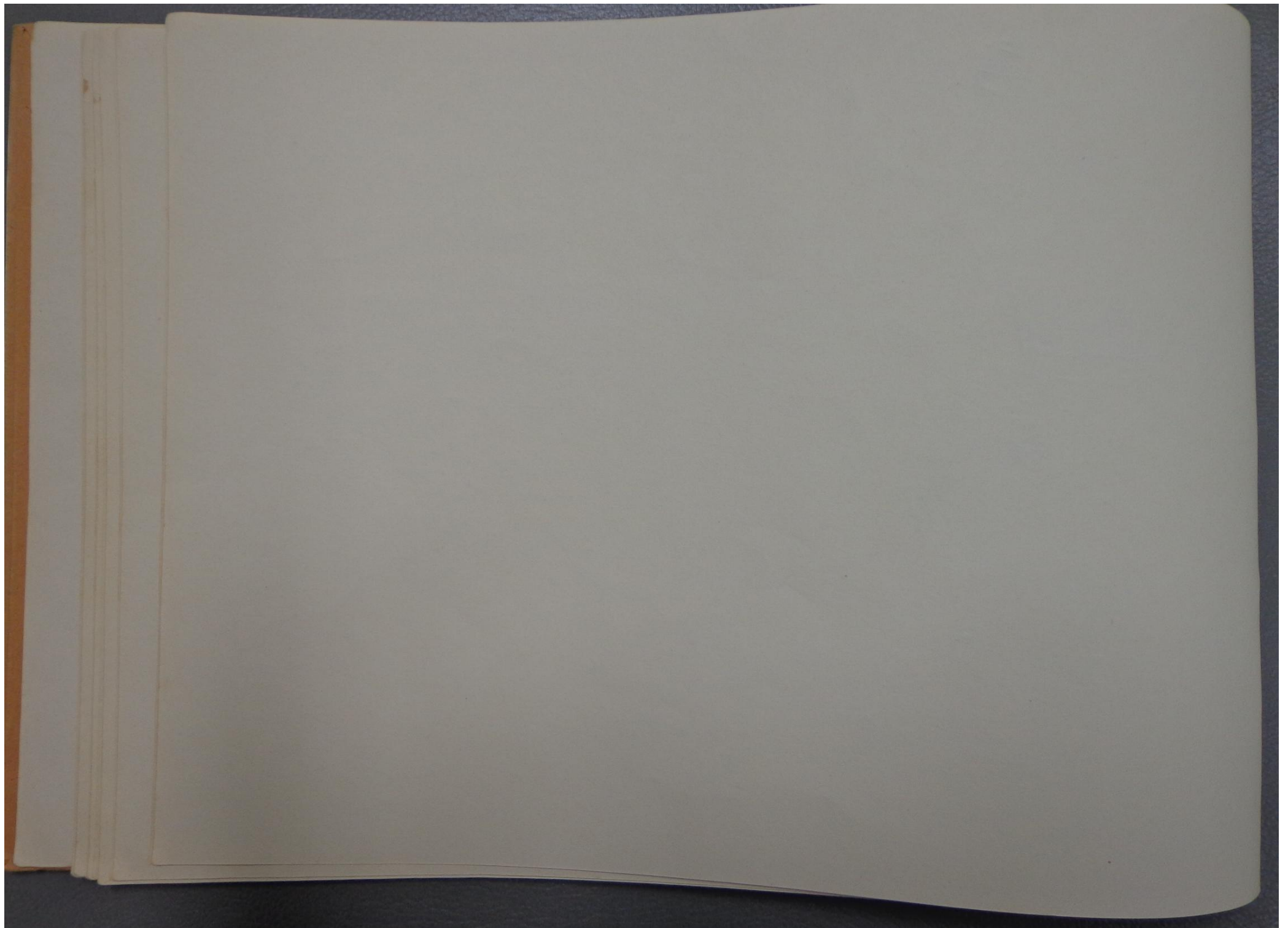


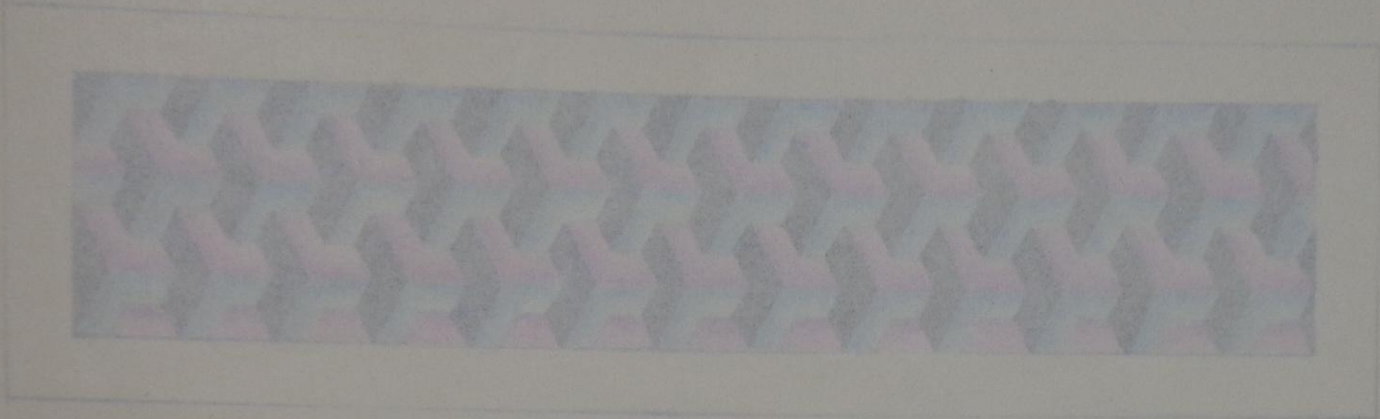






1/4/65  
/ 9/8



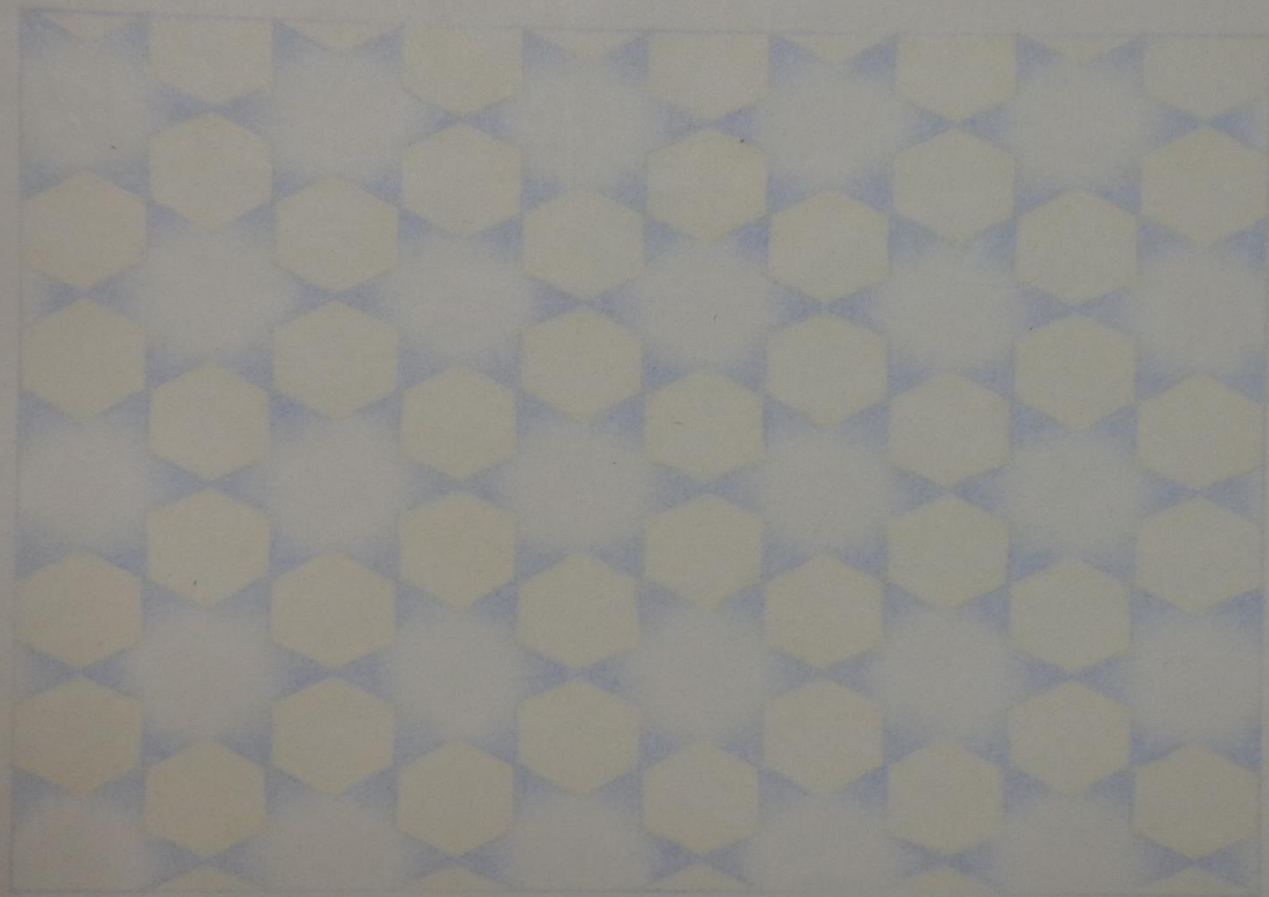


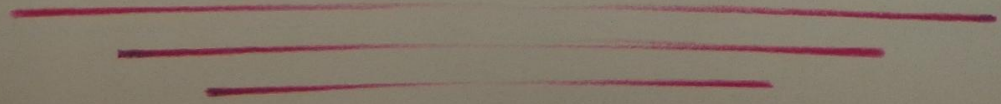
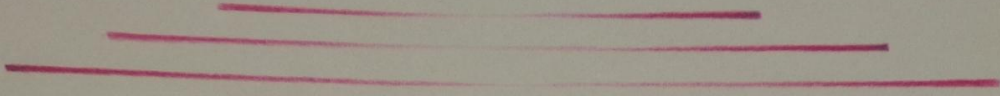
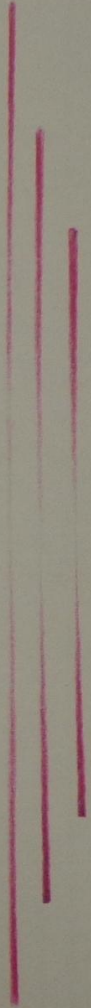
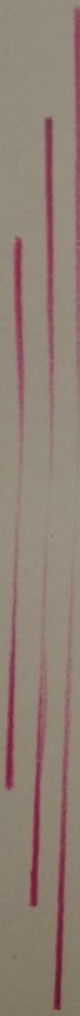
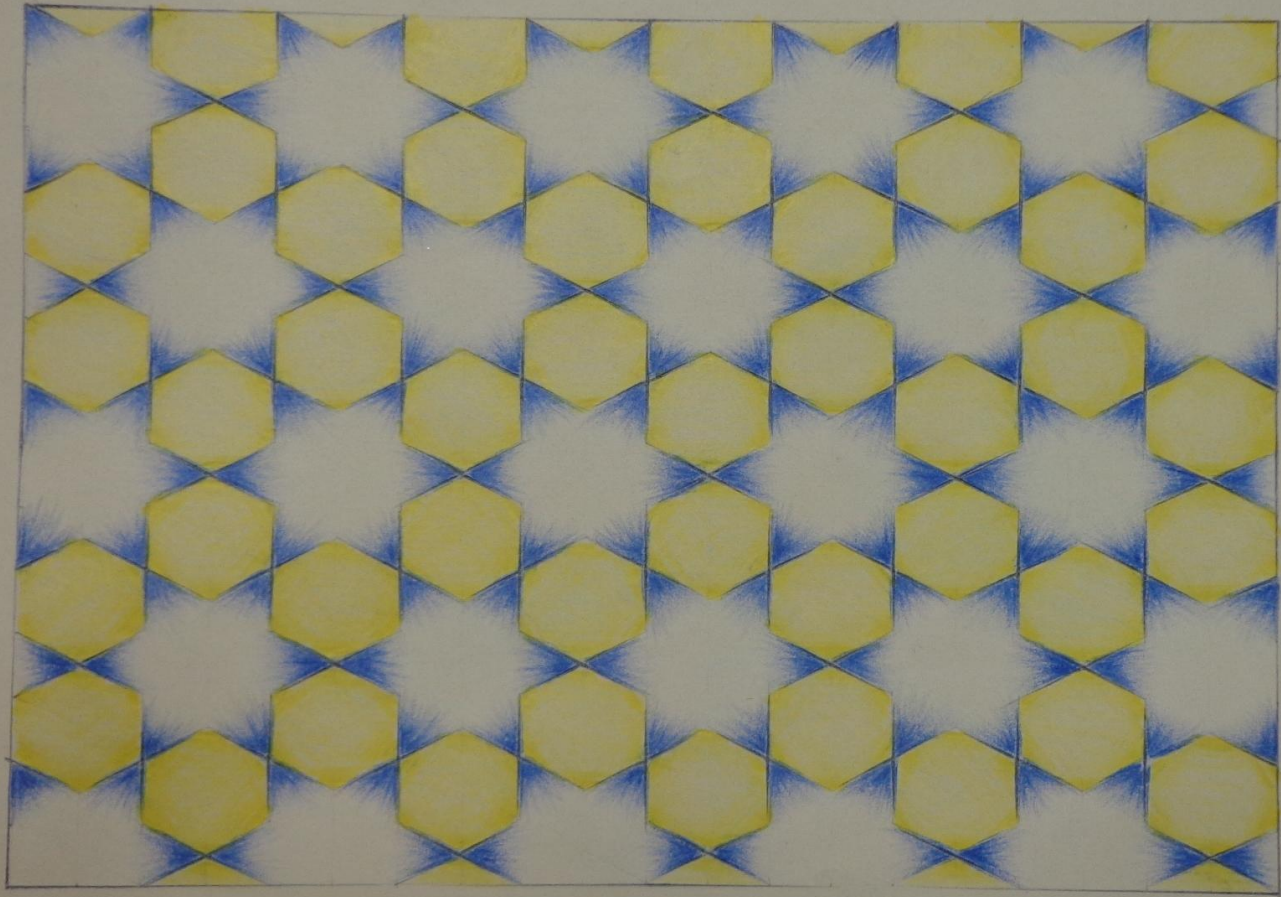
Info - 100 (24)  
Quilting 3/4/4/4

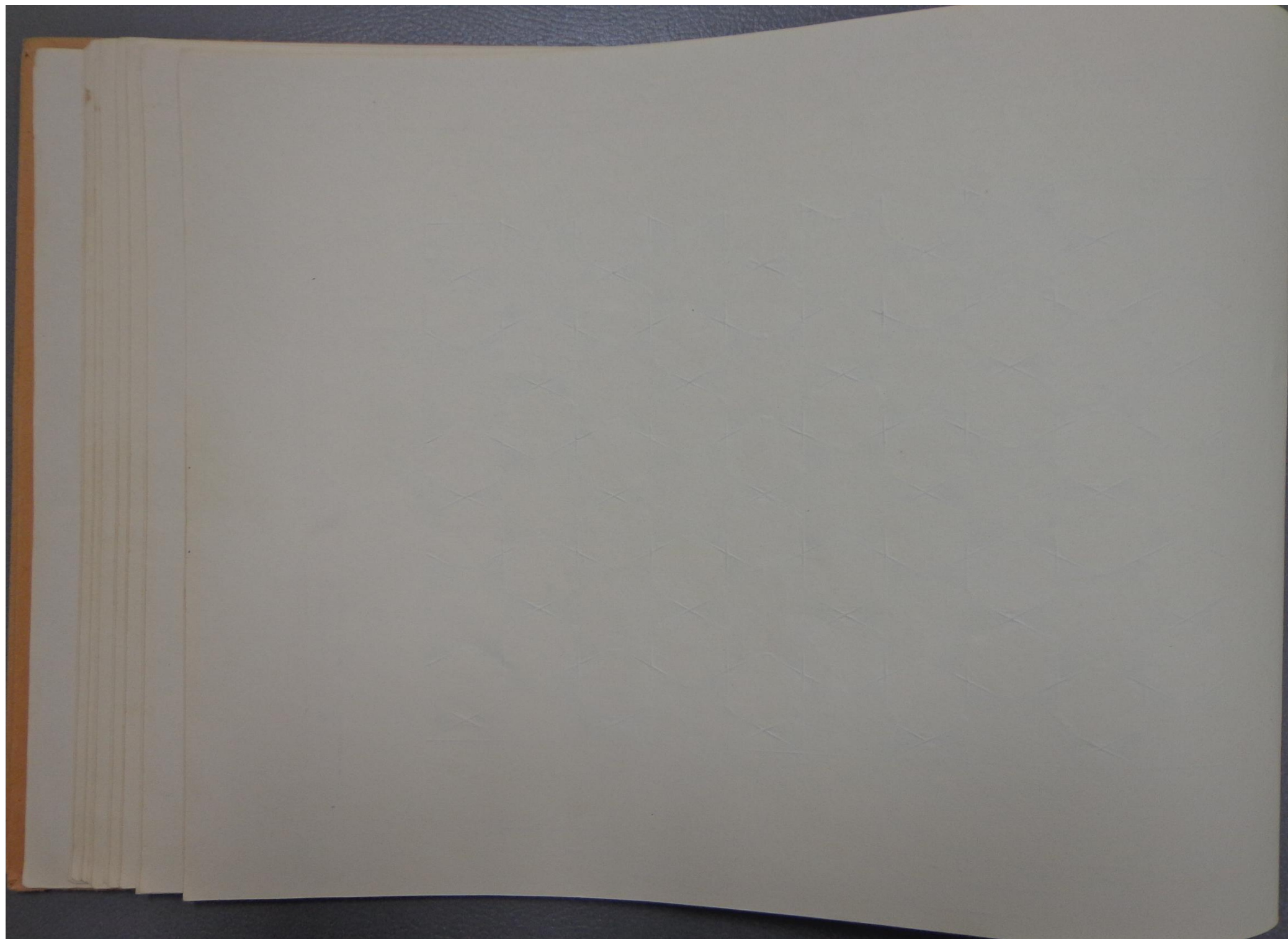


$\frac{1}{2} \text{ into } -10.0 \text{ (deg)}$   
Quintin  
6 23/10/65

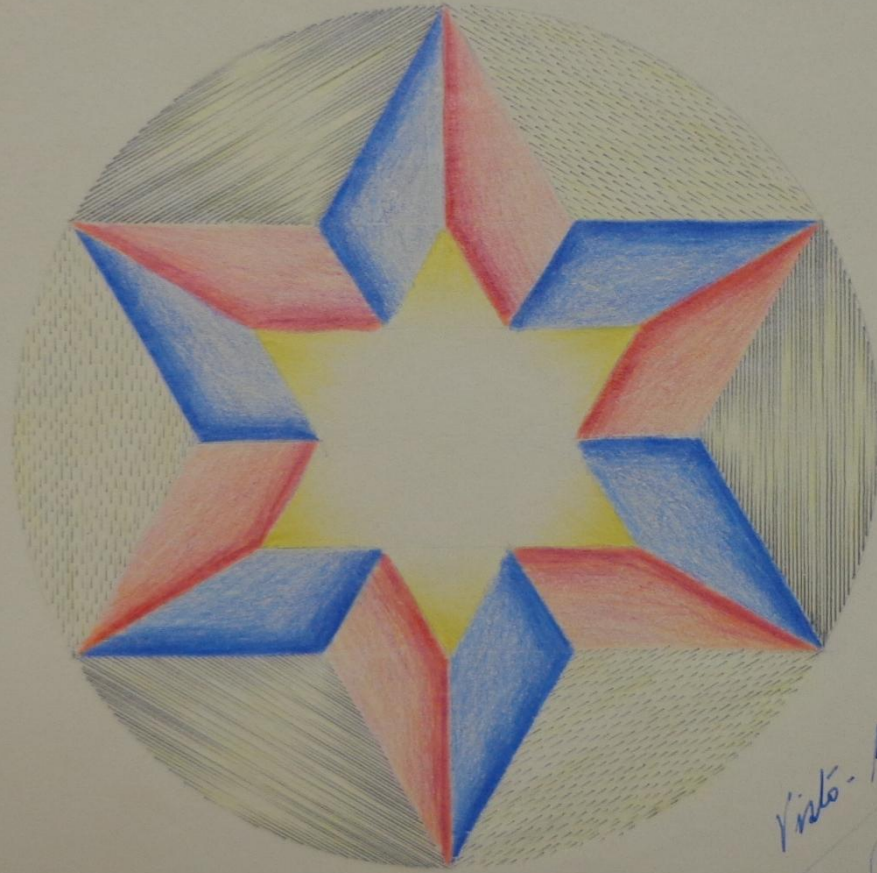
Faint, illegible markings or bleed-through from the reverse side of the page, possibly a stamp or header.











Visto - 10.0 - Parabens!  
P. P. P.

