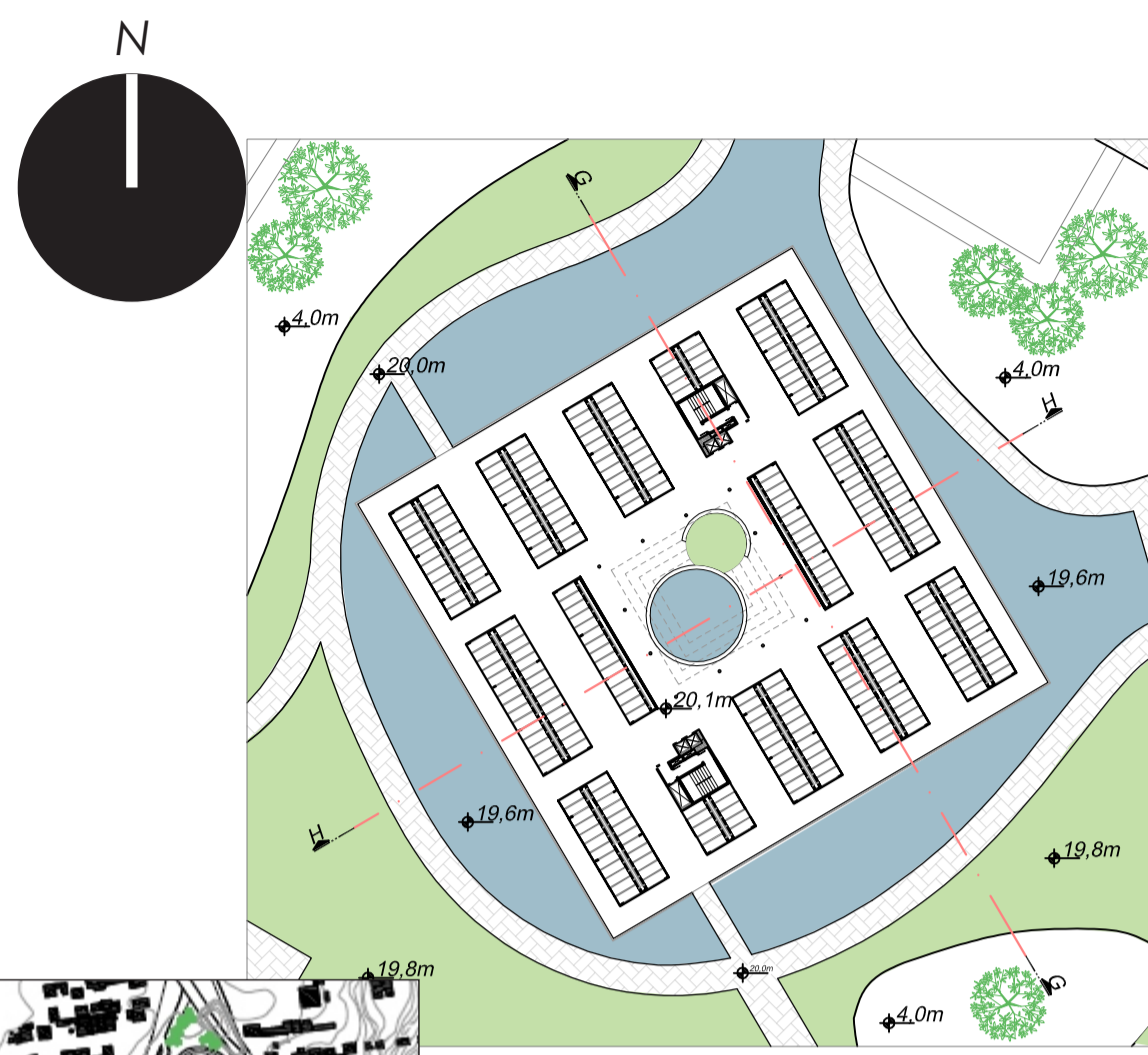
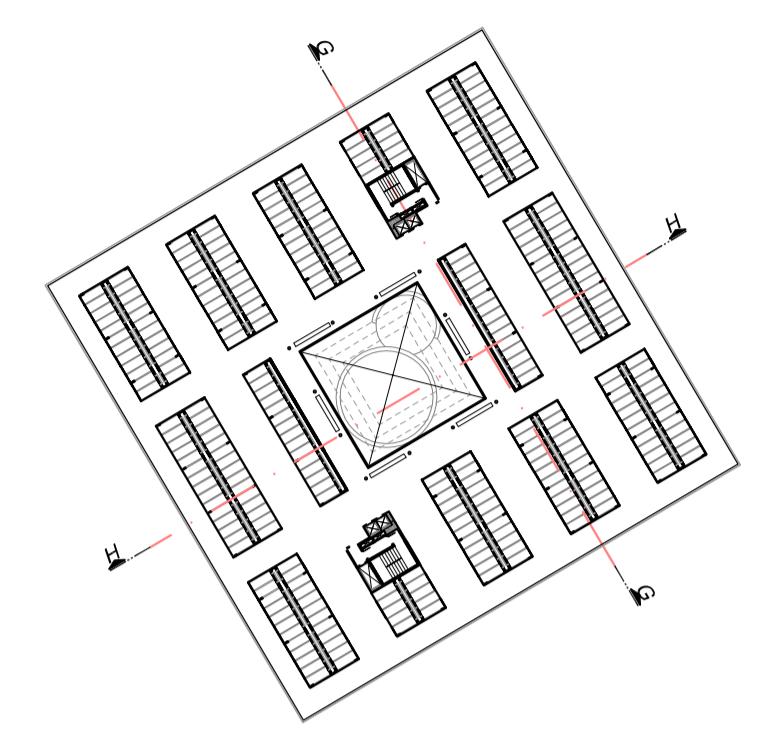


AS TRÊS VELAS - Bloco C

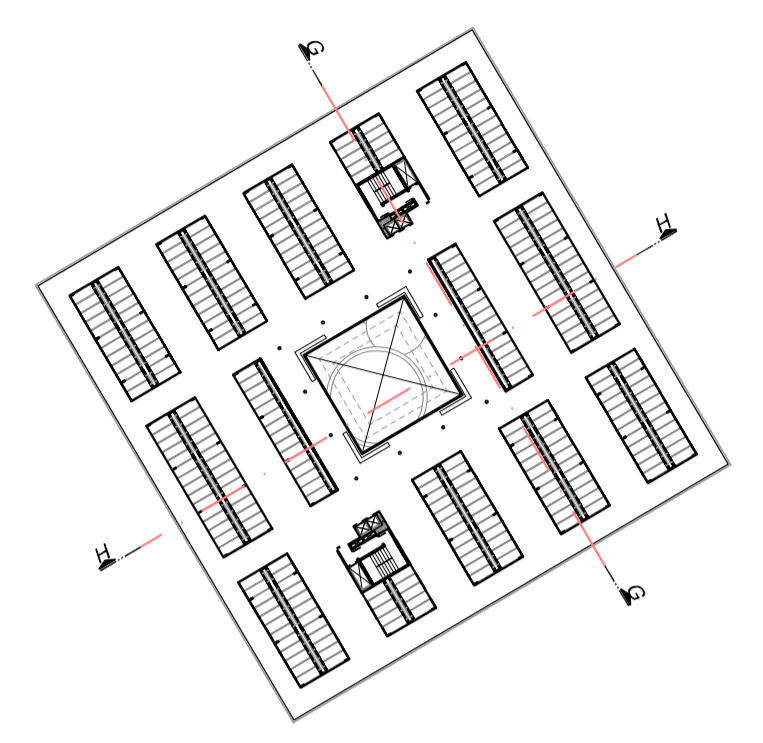
O bloco C tem dimensões de 50x50m, ou seja, uma área de 2.500m²/pav. Por andar, esse prédio apresenta 1.060 lóculos, ou seja, no total, contando os dez pavimentos, o bloco teria 10.600 lóculos.



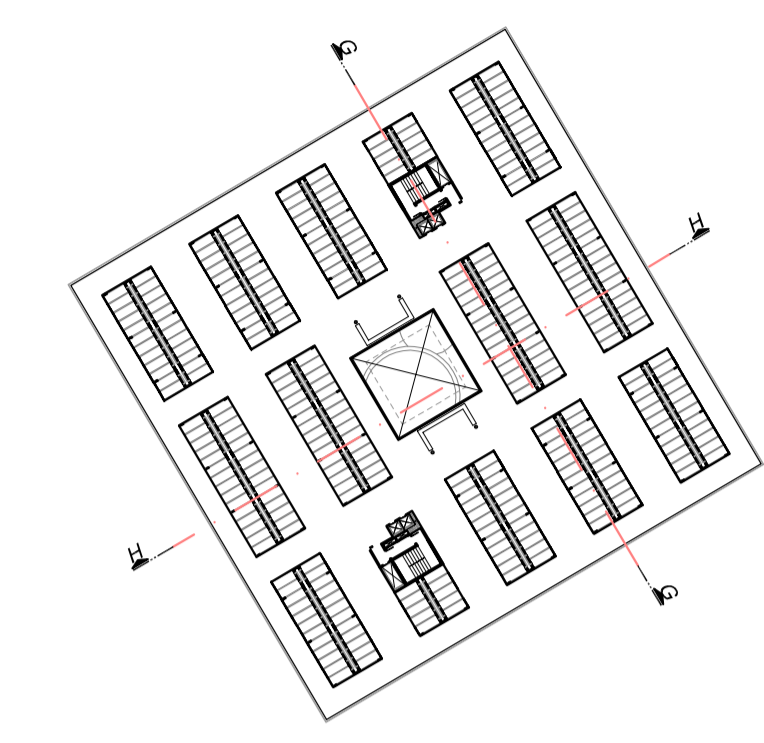
BLOCO C
PRIMEIRO PAV. - LAJE (NÍVEL 20m)
ESCALA: 1/750



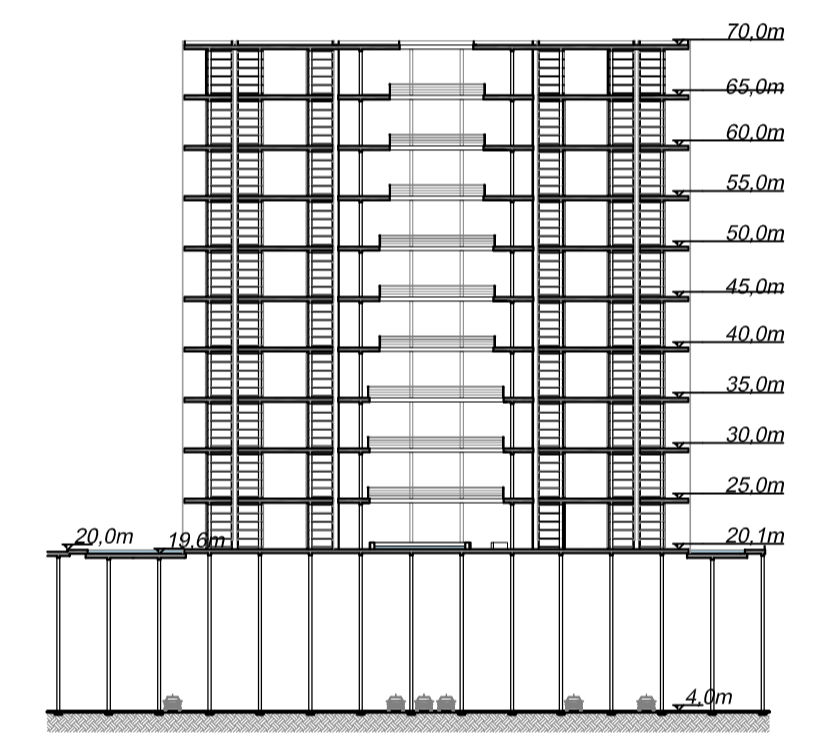
BLOCO C
SEGUNDO, TERCEIRO E QUARTO PAV.
ESCALA: 1/750



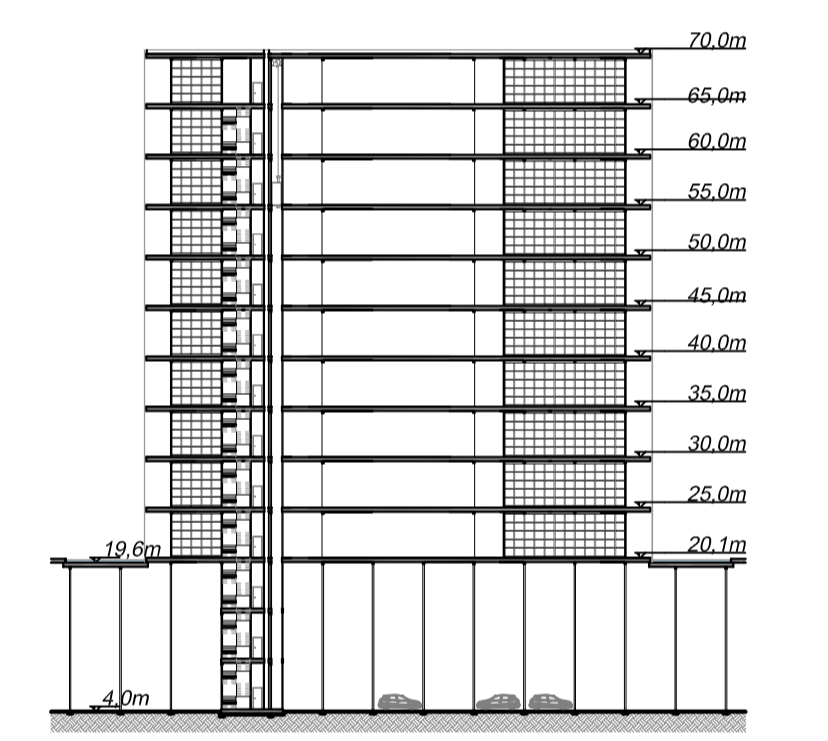
BLOCO C
QUINTO, SEXTO E SÉTIMO PAV.
ESCALA: 1/750



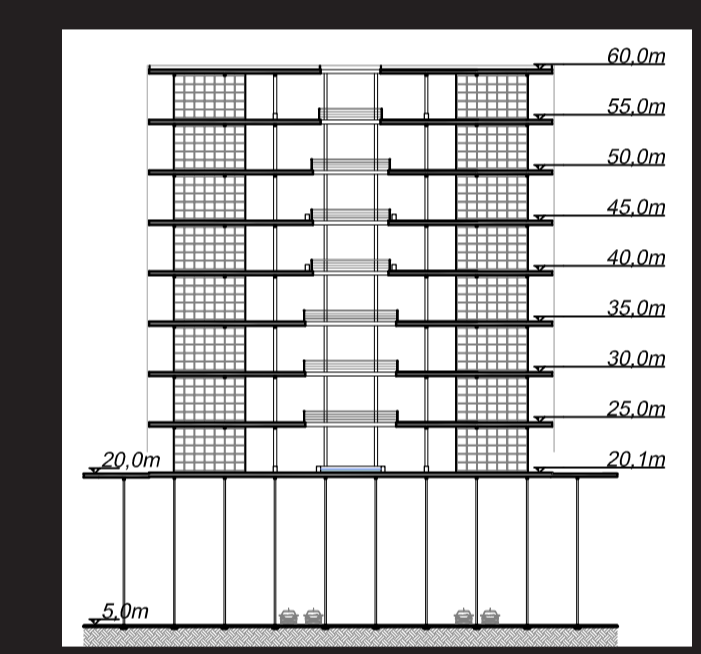
BLOCO C
OITAVO, NONO E DÉCIMO PAV.
ESCALA: 1/750



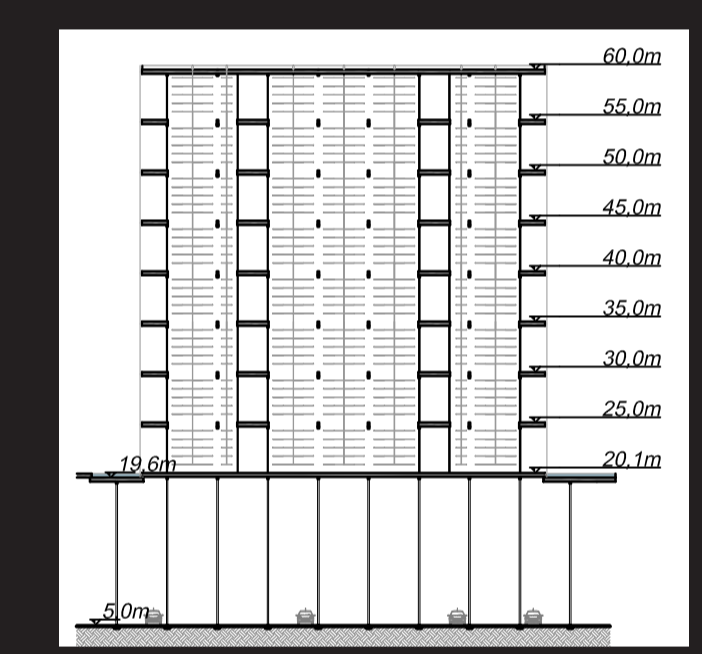
BLOCO C
CORTE HH
ESCALA: 1/750



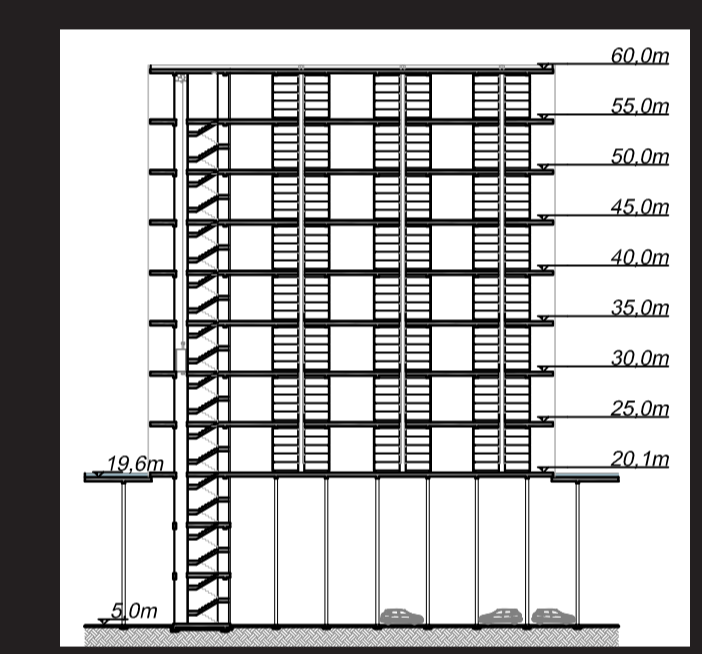
BLOCO C
CORTE GG
ESCALA: 1/750



BLOCO B
CORTE DD
ESCALA: 1/750



BLOCO B
CORTE EE
ESCALA: 1/750

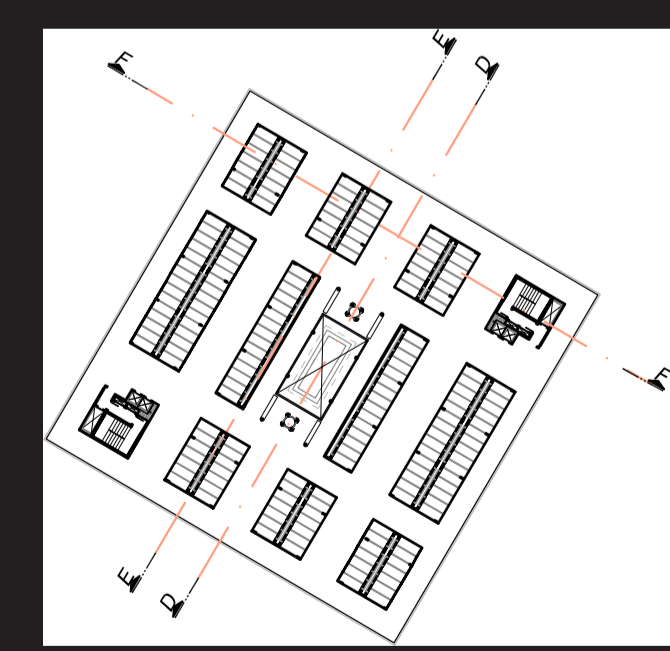


BLOCO B
CORTE FF
ESCALA: 1/750

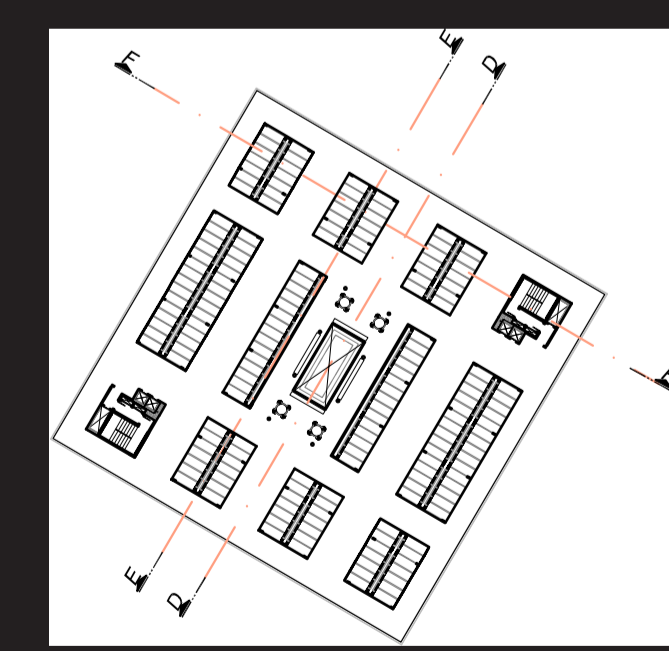
O bloco B tem dimensões de 40x40m, ou seja, uma área de 1.600m²/pav. Por andar, esse prédio apresenta 870 lóculos, ou seja, no total, contando os oito pavimentos, o bloco teria 6.960 lóculos.



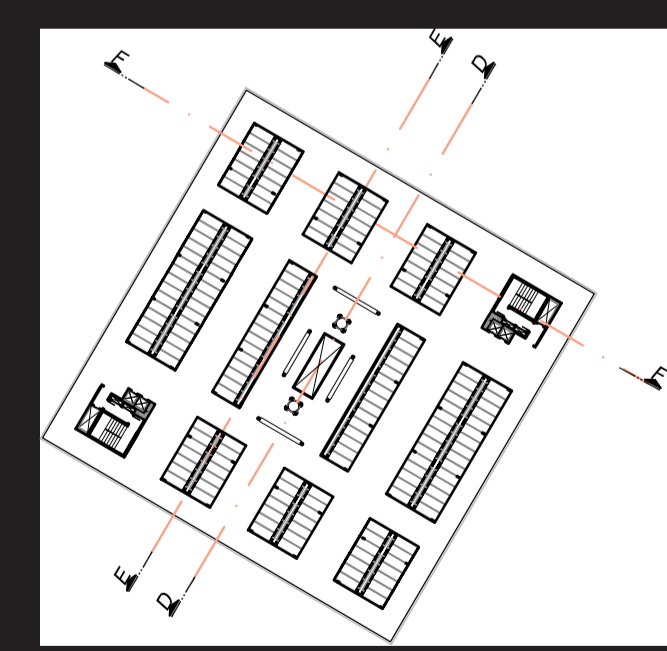
BLOCO B
PRIMEIRO PAV. - NÍVEL DA LAJE (20m)
ESCALA: 1/750



BLOCO B
SEGUNDO, TERCEIRO E QUARTO PAV.
ESCALA: 1/750



BLOCO B
QUINTO, SEXTO E SÉTIMO PAV.
ESCALA: 1/750



BLOCO B
OITAVO PAV.
ESCALA: 1/750

AS TRÊS VELAS - Bloco B