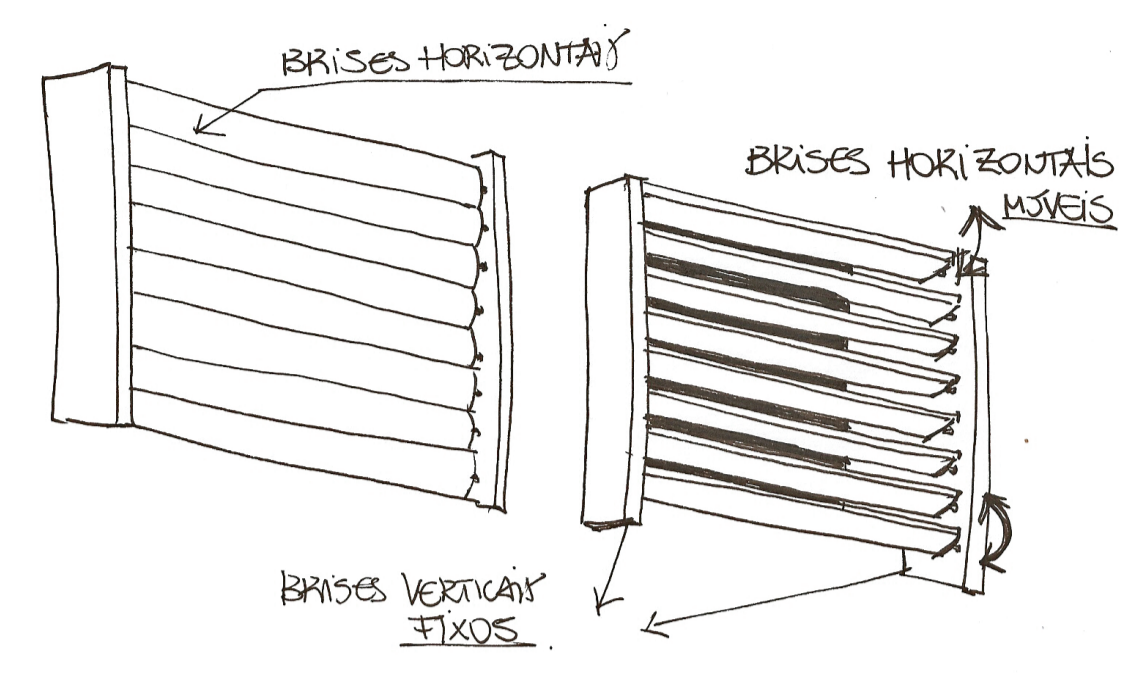


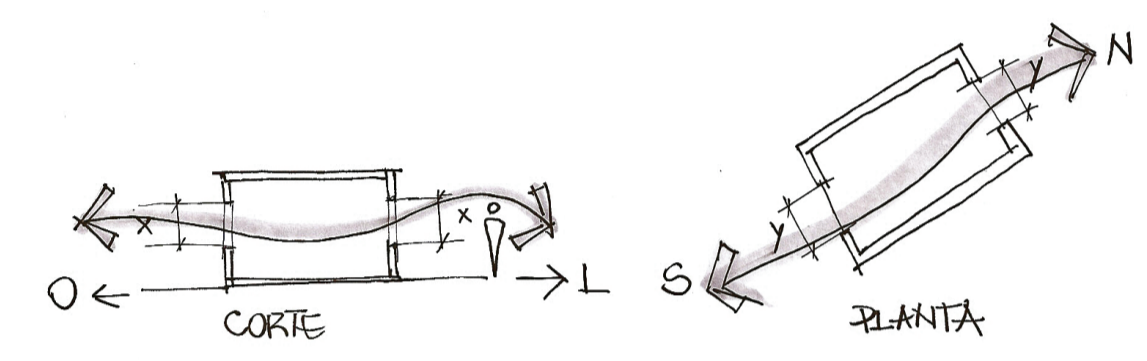
anópolis. Fonte: Labeee - UFSC.

As celas do regime semi-aberto e fechado, orientadas para nordeste e noroeste, contam nas aberturas com proteção mista, combinando brises verticais e horizontais (os quais substituem as grades).



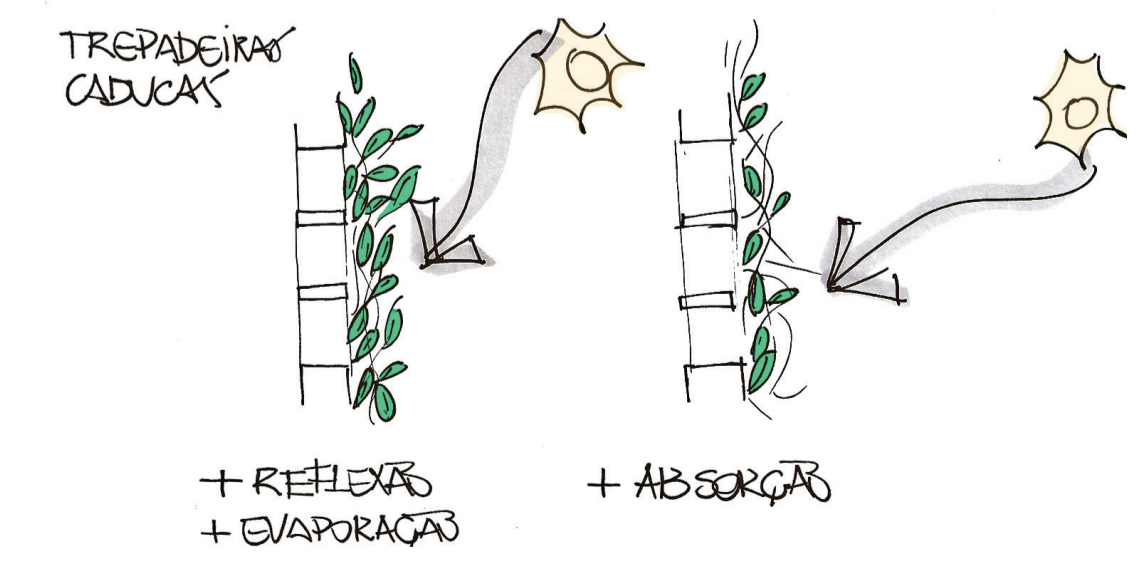
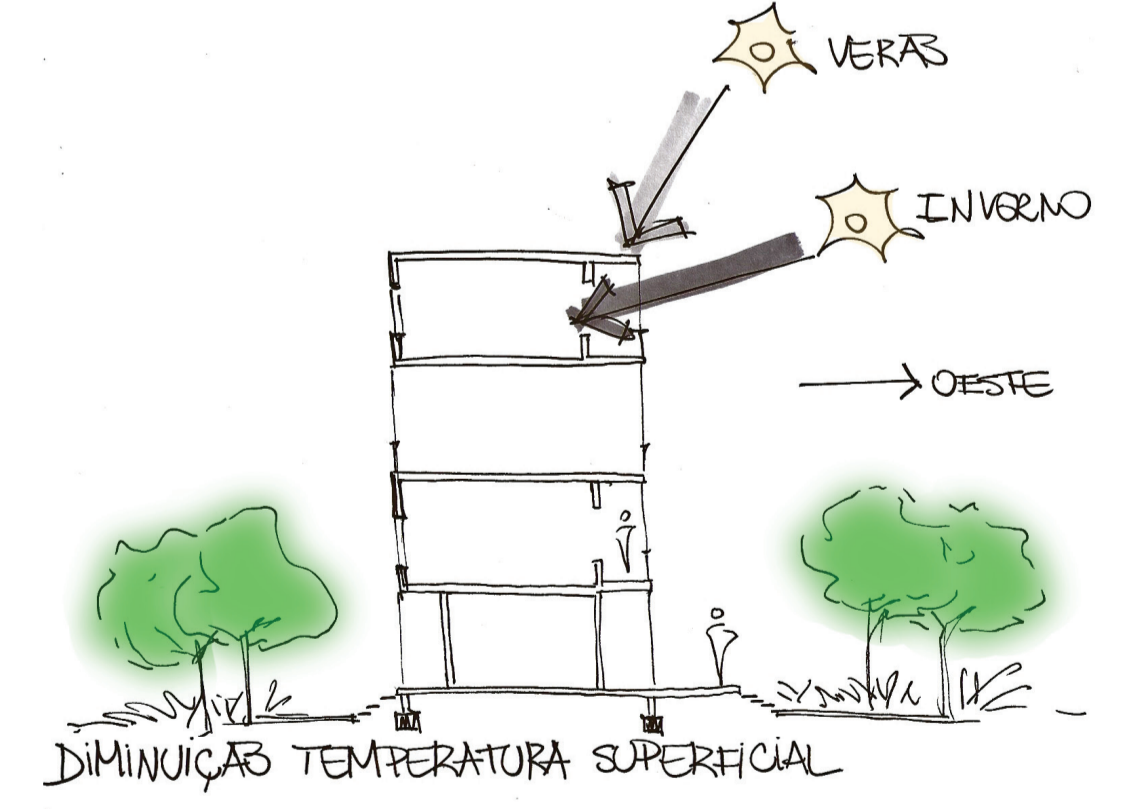
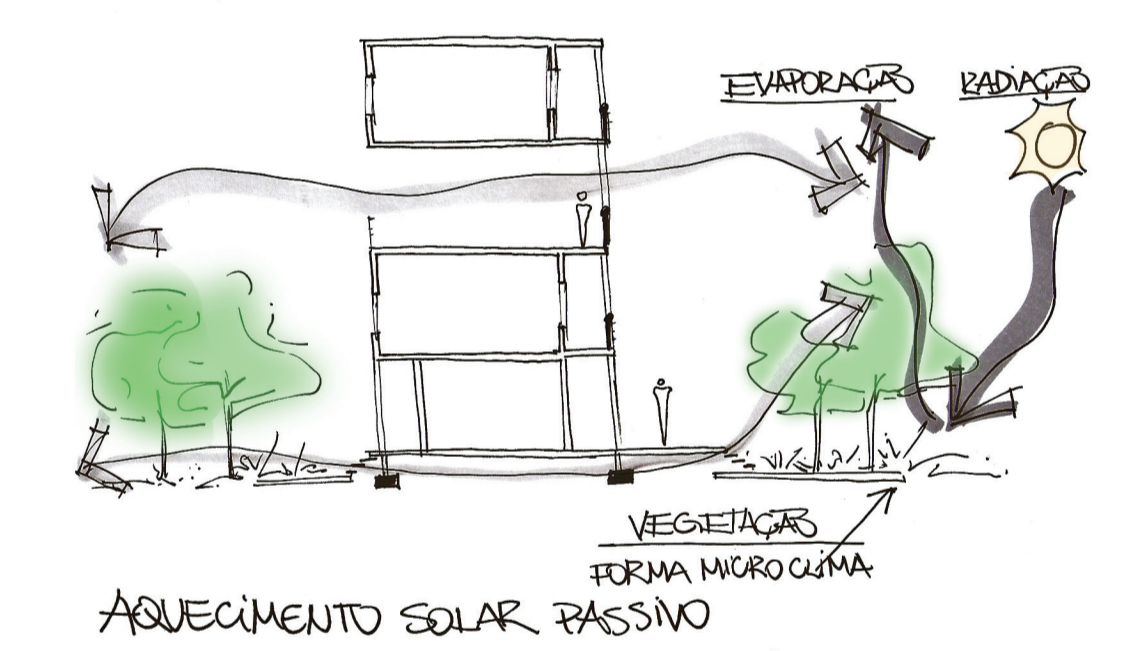
Proteção mista.

VENTILAÇÃO CRUZADA

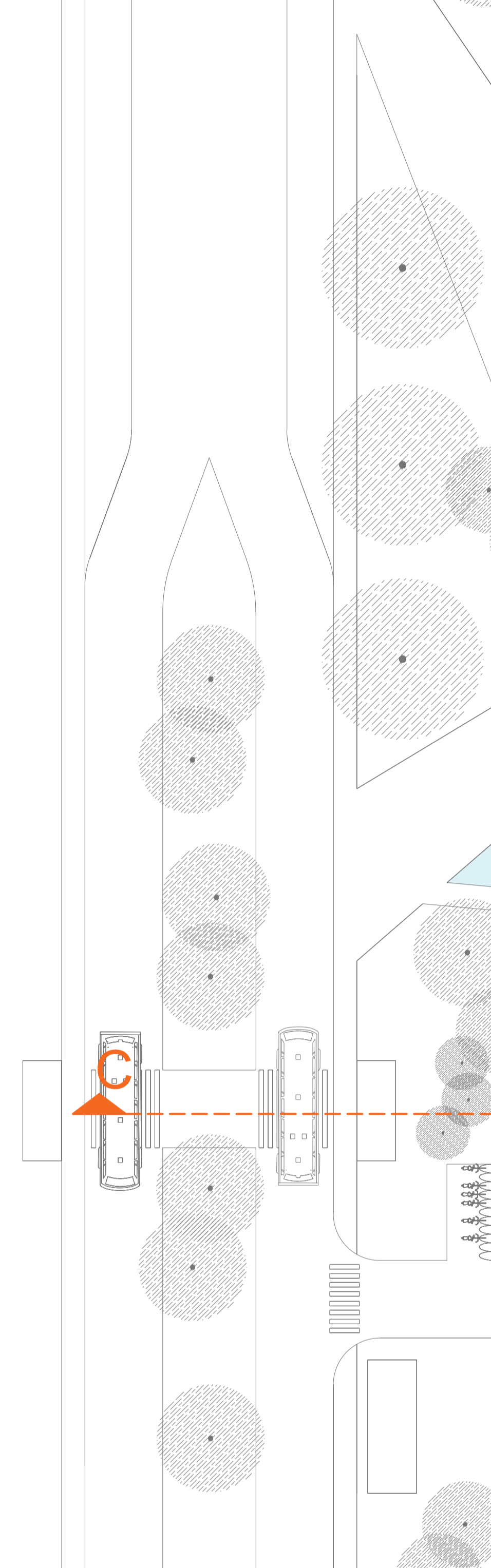


Ventilação cruzada em corte e planta.

VENTILAÇÃO HORIZONTAL - FACHADAS VAZADAS



Ventilação horizontal, aquecimento solar passivo e diminuição temperatura superficial.



FACHADA NO

